

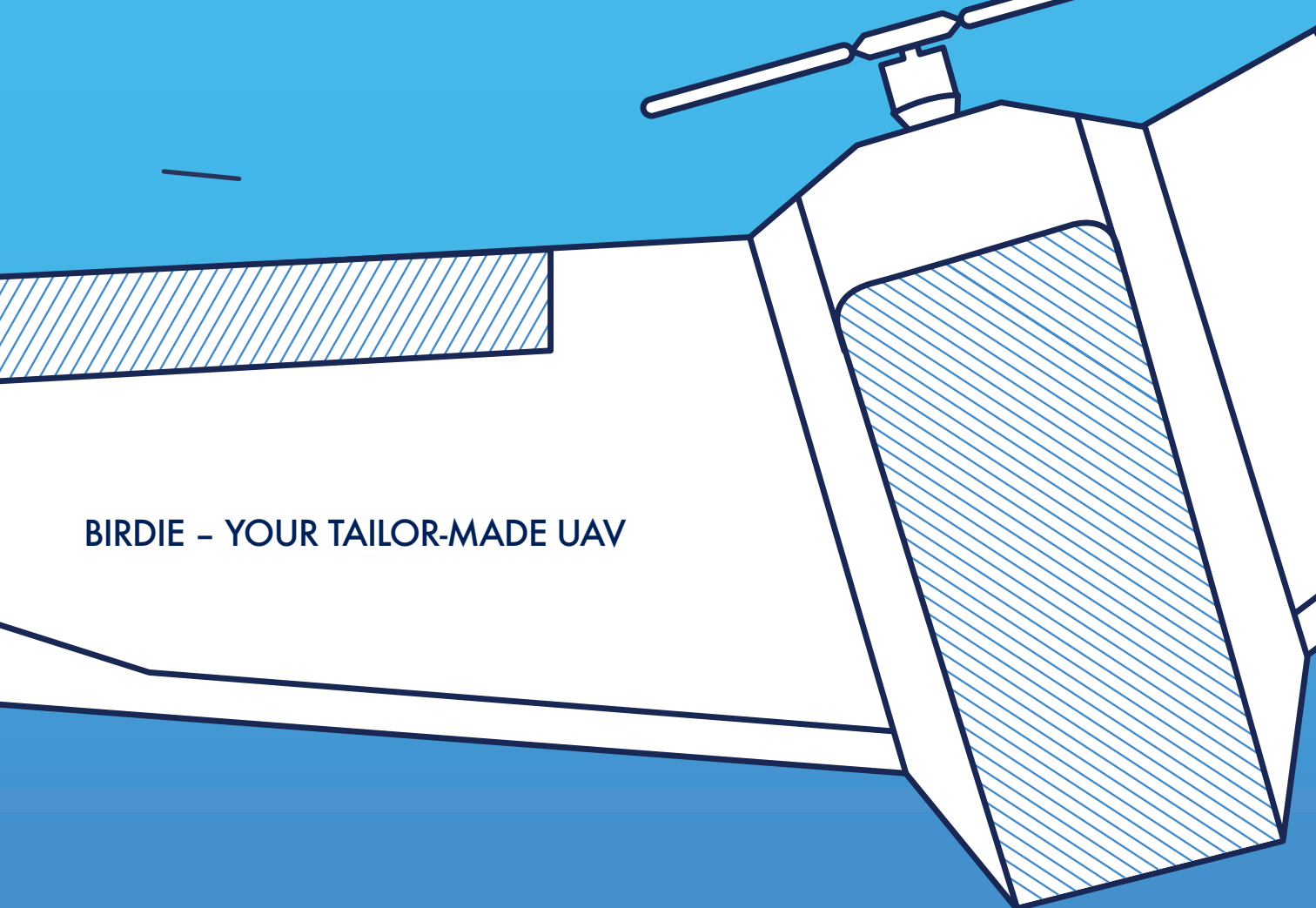
FLY TECH
UAV



BIRDIE UAV

The background is a solid blue color. In the upper right quadrant, there are several thin, dark blue lines. One line is long and slightly curved, extending from the top edge towards the right. Below it, there are two shorter, parallel lines. On the right side, there is a white, angular shape that resembles a stylized letter 'C' or a partial circle. The top part of this shape is filled with diagonal hatching lines, while the rest is white. The bottom edge of this shape is slightly irregular.

SURVEYING
CONSTRUCTION
FORESTRY
AGRICULTURE
ENVIRONMENT
POWER ENGINEERING



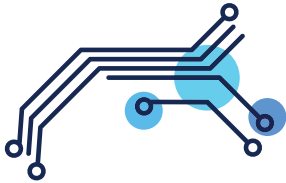
BIRDIE – YOUR TAILOR-MADE UAV

Dedicated to surveying and agriculture, the new Birdie is a well-tailored drone, combining intuitive use and high quality data, thanks to precise sensors and GPS RTK L1 L2 onboard.

We augmented the safety of start and precision of landing. As a result, we present an UAV which is safe, precise and gives highly accurate data.

We also offer a wide range of additional services: a dedicated software to plan and manage a flight, data processing software as well as a flexible offer, allowing customization of your UAV.

MEET BIRDIE AND SEE HOW IT WILL WORK FOR YOU



PRODUCTIVE

Birdie can cover up to 8 sq km covered in one flight. Delivers high-quality data thanks to 24-Mpx camera or optional 42-Mpx full-frame optical sensor.

PRECISE

Precise point positioning GPS RTK L1 L2 saves your time and workforce, providing you with most accurate data without using Ground Control Points.

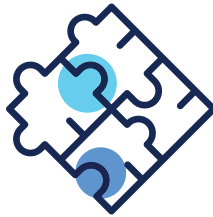


INTUITIVE

Birdie is a strongly user-friendly UAV as it requires no specialized flying skills. Easy launching, precise landing and automated flights - make Birdie a perfect match even for beginners.

SAFE

A simple launch from a hand and precise landing give high level of safety. Autopilot allows mode change (automated/semi-automated), depending on flight situation.



CUSTOMIZABLE

Birdie system is available in configurations adjusted to achieve certain aims and to conduct certain flight types. Choose from available or ask for an individual offer.

COMPLETE

A whole photogrammetric system consists of Birdie system, ground control station with Mission Manager app as well as data processing software.



TECHNICAL DATA

	Birdie Geo	Birdie Geo+
Platform dimensions [length x height x wingspan in mm]	1400 x 570 x 170	1400 x 570 x 170
Folded dimensions [length x height x width in mm]	770 x 450 x 450	770 x 450 x 450
weight [kg]	2,2	2,2
Max. payload [kg]	0,6	0,6
Max. speed [km/h]	90	90
Max. wind speed [km/h]	45	45
Number and type of rotors	1, electric	1, electric
Max stay in the air [min]	60	60
Launching method	From hand	From hand

POSITIONING

Type of GNSS receiver	single-frequency code-phase (GPS, GLONASS, GALILEO, SBAS)	RTK multi-constellation, multi-frequency receiver (GPS, GLONASS, GALILEO, SBAS)
Correction services	DGNSS	PPK, RTK (RTCM), RTN (NTRIP)
IMU	Integrated with autopilot	Integrated with autopilot

SENSORS

Type of camera	Sony A6000	Sony RX1R II
Focal length [MPx]	24	42
Type of lens	Voigtlander 21 mm	Carl Zeiss 35 mm
Image resolution [cm for certain height]	2 cm for 100 m	2 cm for 150 m
Productivity in one flight [area for certain resolution]	1,8 sq km for 2 cm	2,5 sq km for 2 cm
Optional sensors	Rededge, Sequoia, Flir Vue Pro, others	Rededge, Sequoia, Flir Vue Pro, others

CONNECTION SYSTEM

Radio link range [km]	3 km*	3 km*
-----------------------	-------	-------

*for special applications could be enlarged

BIRDIE – THE EFFICIENT SURVEYOR

Model	Focal Length	Flight altitude [m]	Terrain resolution [cm]	Maximum flight area [km ²]
BIRDIE GEO	21	535	10	9,0
		270	5	4,5
		215	4	3,6
		160	3	2,7
		105	2	1,8
BIRDIE GEO	40	510	5	4,5
		310	3	2,7
		200	2	1,8
BIRDIE GEO+	35	540	7	8,3
		385	5	5,9
		270	3,5	4,1
		155	2	2,4
		120	1,5	1,8

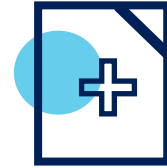
**NOTE: SIDE AND FORWARD OVERLAP 70%,
FLIGHT SPEED 20 m/s, FLIGHT TIME 50 min**

MISSION MANAGER

Successfully plan and manage your flight. Fulfil a prepared flight procedure, check current weather conditions and forecast.



- Intuitive use, transparent layout
- automated/semi-automated planning of photogrammetric flight on set area
- fully autonomous take-off, flight and landing elevation AGL or ASL mode
- automated locating of flight area, based on the address
- support of FlyTech UAV's systems and integrated optical sensors
- live weather conditions and forecast



PLAN

Flight management software to plan and manage a flight

Plan your flight in details before starting a new mission. Follow flight procedure: check weather conditions, set route, complete a checklist.

FLY

Ground Control Station

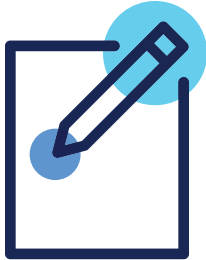
Manage your flight with the intuitive panel. It's up to you whether to conduct an automated flight or to use semi-automated mode.

CREATE

Photogrammetric Software

Proceed collected data with the professional mapping and aerial image programme. Choose between a vast array of a specialized software: 3Dsurvey, Agisoft Photoscan, Pix4D.

TECHNICAL SUPPORT

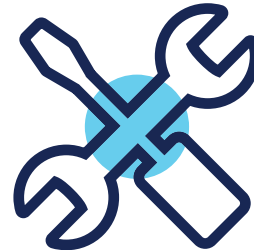


WARRANTY

All our products are covered by producer's warranty. If you need to expand a standard warranty services, just contact our consultant.

TECHNICAL SERVICES

Coming across a technical issue? Our service technicians will fast and effectively help you to solve occurring problems. Also, if your UAV requires servicing, we will ensure proper help.



AFTER-SALES SUPPORT

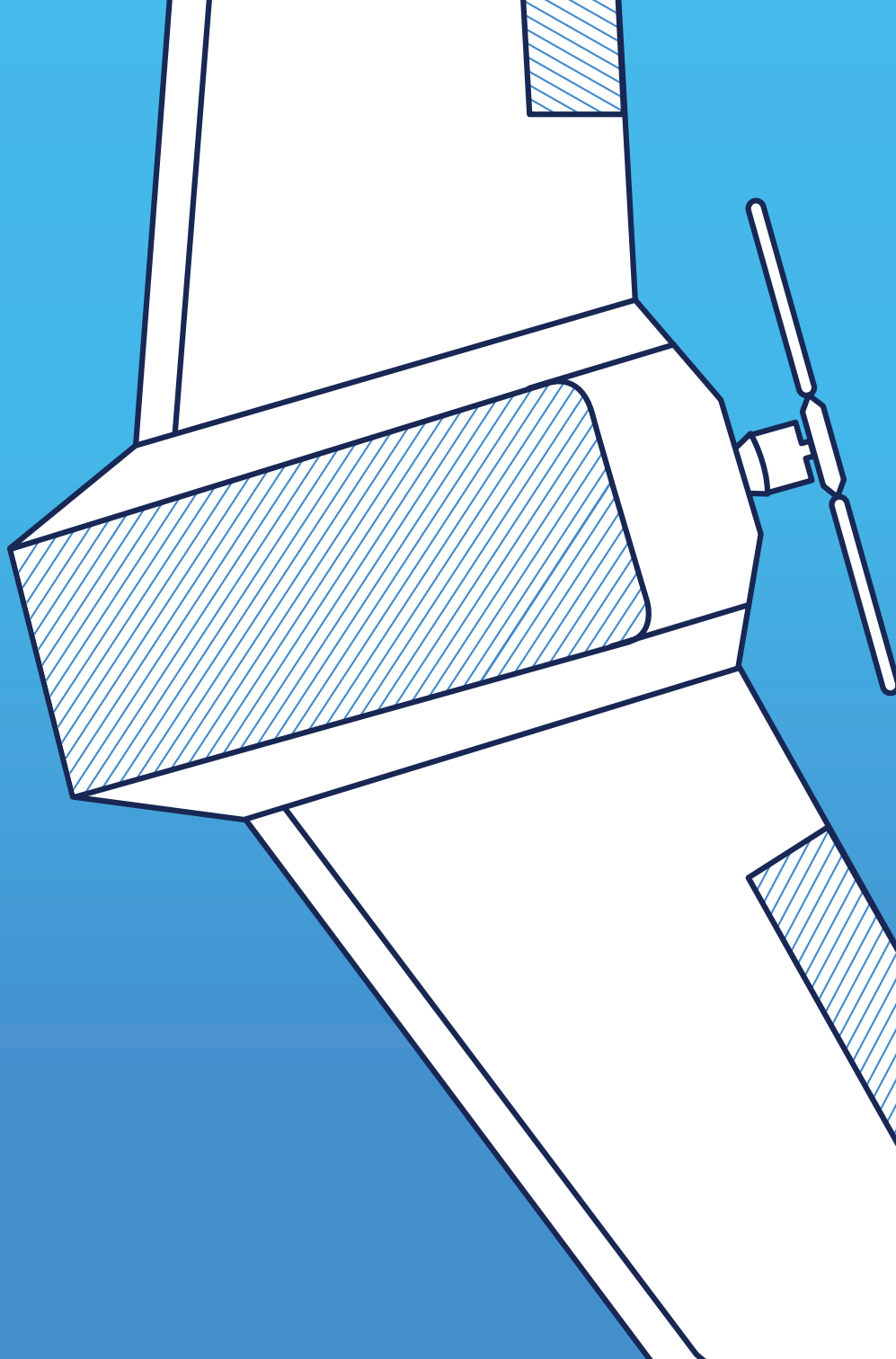
our consultants will answer your questions concerning exploitation of UAV and will provide you with additional training/training materials as needed.

CONTACT US

FlyTech UAV Ltd.

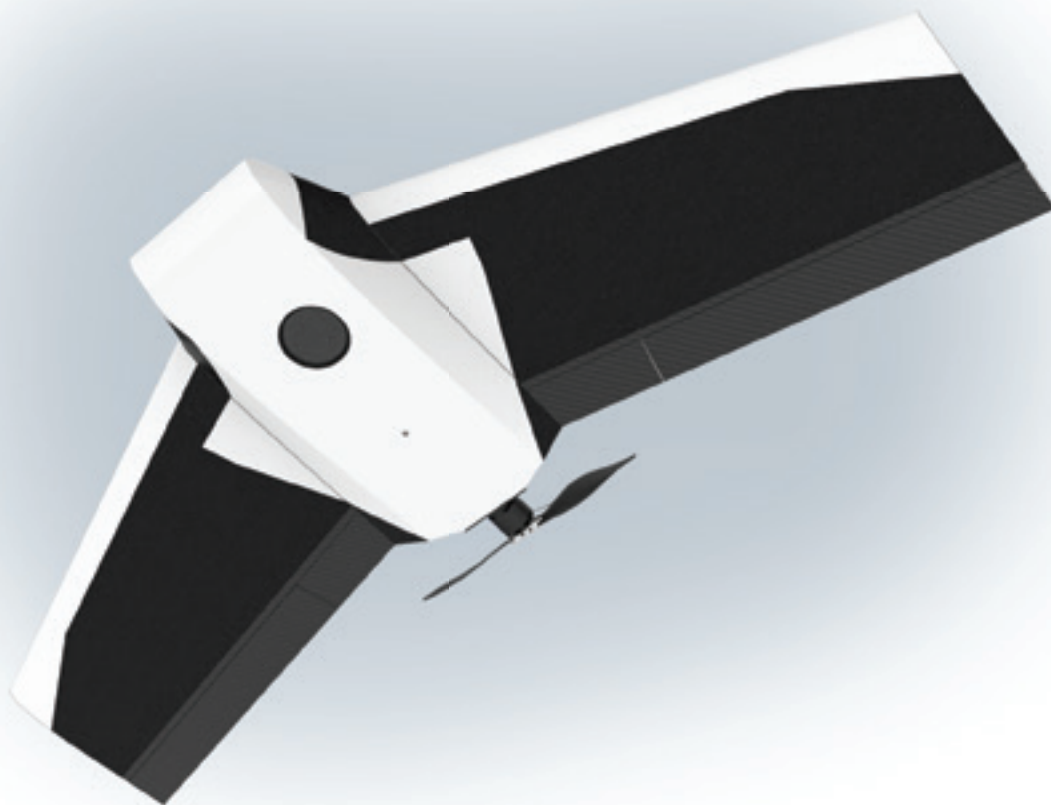
FlyTech UAV Ltd.
sales@flytechuav.com
+48 690 446 591
www.flytechuav.com

ul. Balicka 18A
30-149 Krakow
Poland





FLY TECH
UAV



WWW.FLYTECHUAV.COM